

INSTRUCTION SHEET

3D Crystal Lacquer (Acid free)

3D Crystal Lacquer is CLEAR and is available in a 2oz Starter pack and 4oz Refill. 3D Crystal Colour Lacquer is also available in PRIMARY Colours (darker) and PASTEL Colours (lighter) sets of 'six' pens' and also in some individual colours (1.2oz bottle).

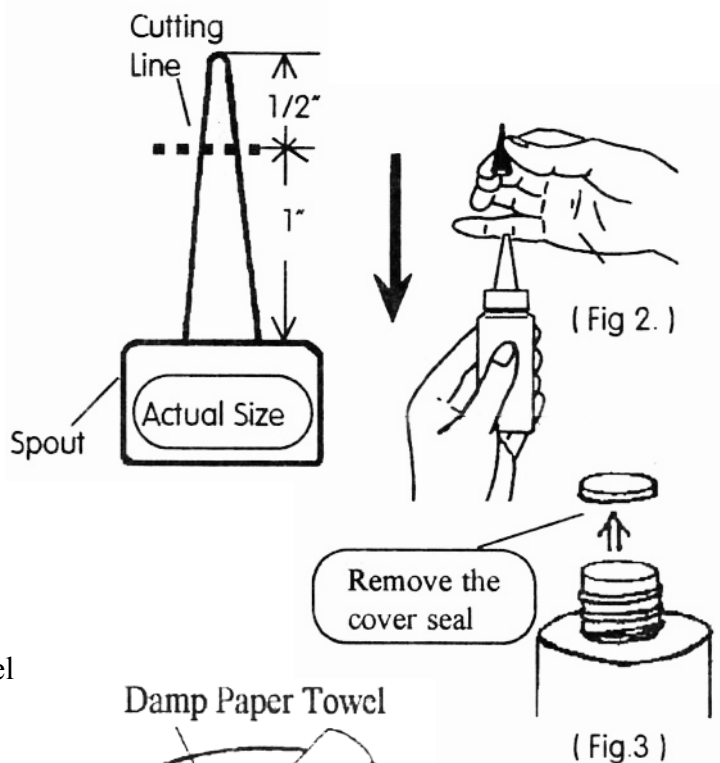


Before you start, please read all instructions :

- * Choose the material on which you can apply the lacquer. You can apply 3D Crystal Lacquer to:
 - (a) Any prepared or printed image eg. postcards, greetings cards, pictures, photographs
 - (b) Coloured illustrations eg. drawings, pencil sketches
 - (c) Coloured images as used in decoupage and stamping applications - create your decoupage or stamp image in the usual way, then emphasise and add another dimension with 3D Crystal Lacquer!
- * Make sure your project and work area is dust free.
- * The project must be done on a flat surface, horizontally.
- * Use and store 3D Crystal Lacquer at room temperature. Avoid extreme temperatures.
- * DO NOT SHAKE 3D Crystal Lacquer. Shaking will create air bubbles which will appear in your project. To burst an unwanted bubble, use a pin or lightly touch with the bristles of a dry paint brush.
- * Place the lacquer upside down inside a mug or beaker with dampened paper towel in the bottom. Using in this way reduces the need to repeatedly invert the 'bottle' and prevents air being trapped in the lacquer.
- * Always store the fine tip under water when not in use to prevent the tip from drying and clogging.
- * Wait a few minutes to let one section dry before you apply 3D Crystal Lacquer onto the next image to prevent the lacquer areas from merging into each other.
- * Drying time between layers for normal applications is 10 to 20 minutes. Larger areas and thicker application will take longer to dry.
- * Have extra paper towel and cotton buds handy. A painting brush can be used for the background.
- * 3D Crystal Lacquer is waterbased, for easy cleanup, before the lacquer dries.
- * The lacquer dries to a "Crystal Clear" high gloss finish.

How to install the applicator tip onto the bottle :

- (1) Remove the cap from the top of the spout.
- (2) Cut off the pointed end of the spout with scissors or knife (look at Fig.1 to see where to cut)
- (3) Push the applicator tip down firmly onto the spout - the tip will stay in position by itself (Fig.2).
- (4) Remove the cover seal inside the bottle and put the spout in position again (Fig.3).



How to prevent the tip from clogging :

- (1) When you are using 3D Crystal Lacquer, rest the bottle in a container (tip down) on a moist paper towel in the bottom of a mug or other suitable container (Fig.4). This will prevent the tip from becoming clogged whilst in use.
- (2) When you are finished, wash the tip with warm running water, making sure that the inside is clean. You can blow into the tip to make sure it is clear. Store the tip under water (eg. in a small individual jam jar)

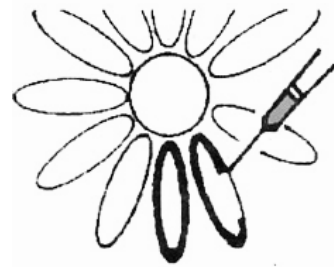


(Fig.4)

Basic Technique for 3D Crystal Lacquer

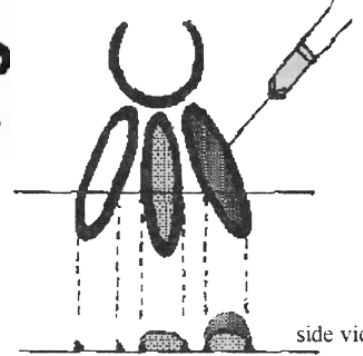
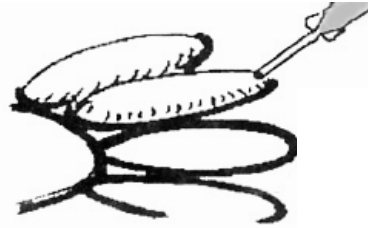
(1) Outline the image :

Outline the image where you want to raise with 3D Crystal Lacquer. For embossed stamp images, apply within each embossed line.



(2) Fill in :

Fill in the outlined images, keeping some space between each section to prevent unwanted merging - if sections are very close, allow one to dry before completing the next. Mistakes can be removed by wiping and dabbing immediately with a cotton bud.



Outline only 1st layer 2nd layer

side view

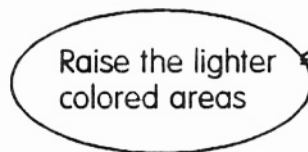
(3) Raising Images :

You can re-apply 3D Crystal Lacquer over the dried areas to raise the images to the desired level. Try to avoid overlaps which can spoil the effect - remove errors with a cotton bud. Usually up to four layers is sufficient for most images

Further Techniques :

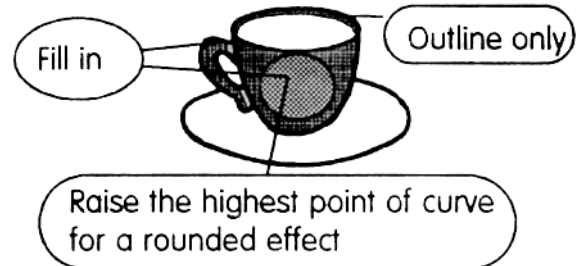
(4) Wavy images :

Wavy images (eg a flag) are raised wherever the colour seems to be the lightest.



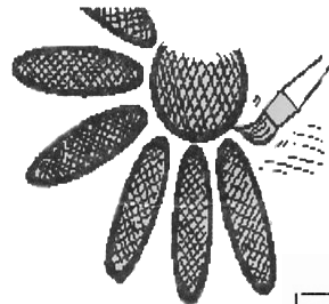
(5) Rounded images :

Rounded images are raised the highest in the areas that curve towards you. Areas that recede or appear further away should not be raised so much, and may only need to be outlined.



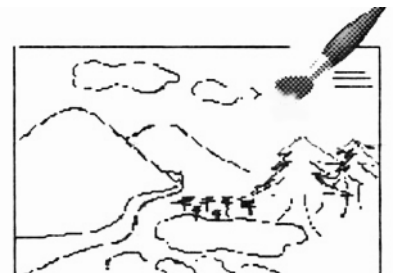
(6) Using a soft-bristled paintbrush :

Use a soft-bristled paintbrush to apply a final layer to the spaces between raised images, to link them together.



(7) Background images :

If the background is black or white, then it should not be lacquered. If a background has strong strokes, apply a thin coat of lacquer with a paint brush, following the brush strokes in the picture.



INSTRUCTION SHEET

3D Crystal Colour Lacquer (Acid free)

3D Crystal Colour Lacquer is an addition to the usual CLEAR 3D Crystal Lacquer already available in a 2oz Starter pack and 4oz Refill. The Crystal Colour Lacquers are available in PRIMARY Colours (darker) and PASTEL Colours (lighter) : sets of six 'pens' and also as individual colours (1.2oz bottle).



Before you start, please read all instructions :

* Choose the material on which you can apply the lacquer. You can apply 3D Crystal Colour Lacquer to:

(a) Any prepared or printed black and white image eg. postcard, photograph

(b) Outline shapes, eg. peel-off stickers

(c) Black & white illustrations eg. greetings card, pencil sketch

(d) Black & white stamped images and embossed stamped image. For stamping, create your stamp image in the usual way, then colour in with Crystal Colour Lacquers and add more layers as desired.

* Make sure your project and work area is dust free, and it is best done on a flat surface, horizontally.

* Use and store 3D Crystal Colour Lacquer at room temperature. Avoid extreme temperatures.

* DO NOT SHAKE 3D Crystal Colour Lacquer. Shaking will create air bubbles which will appear in your project.

* Place the lacquer 'pens' upside down inside a mug or beaker with the caps secure. Using in this way reduces the need to invert the pens and prevents air being trapped in the lacquer. Only take the caps off for use and then replace immediately. Recap after each use, to prevent the tip from drying and clogging.

* Wait a few minutes to let one section dry before you apply 3D Crystal Colour Lacquer onto the next image to prevent the lacquer areas from merging into each other.

* Drying time between layers for normal applications is 10 to 20 minutes. Larger areas and thicker application will take longer to dry.

* 3D Crystal Colour Lacquer is waterbased, for easy cleanup, before the lacquer dries.

* 3D Crystal Colour Lacquer when dried completely will have a "High Gloss" finish.

* Have extra paper towel cotton buds handy.

* After use, always store the Colour Lacquer 'pens' upright with the lacquer away from the nozzle.

Basic Technique for 3D Crystal Colour Lacquer

(1) Outline, then fill in :

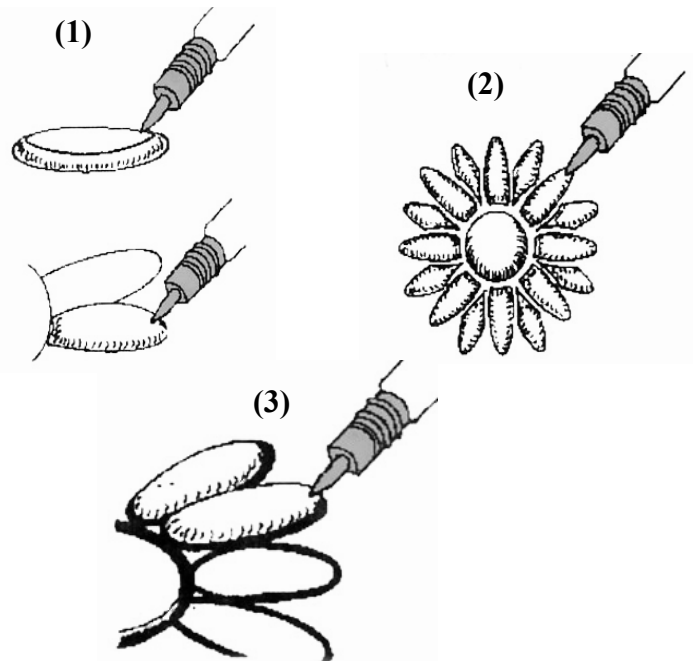
Outline the image where you want to raise with 3D Crystal Colour Lacquer. Then, fill in.

(2) Keep a space :

In order to create an effective 3D image and clear colour appearance, allow about 10-15 minutes for the lacquer to dry before applying to very next section of image. This will prevent merging.

(3) If embossing :

If the image is embossed, apply 3D Crystal Colour Lacquer within the Embossed line to avoid sections from merging into each other.



Additional Techniques :

(4) For darker colour and raised higher, apply another layer of the same colour on top of the previous layer after it has dried.

(5) For a raised image, but in the same colour, apply clear lacquer after the first coloured layer has dried.

(6) You can mix colours. Mix in a small container and use a brush to apply. Alternatively, you can blend and shade - apply two colours in the same area and mix with a pin to create shading and colour depth etc.